

GBM eligibility to donate



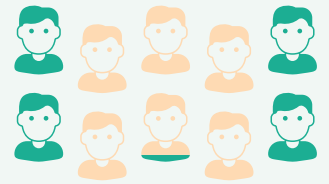
Current
New Zealand policy

APPROX. **13%** ELIGIBLE



Potential future
"UK-style" policy

APPROX. **37%** ELIGIBLE



Potential future
"Canada-style" policy

APPROX. **41%** ELIGIBLE

Future intentions, in their own words

Participants less inclined to donate blood in future:

Intense fear of needles

My culture does not allow me to do this

I can contribute to society in so many other ways. There is no way that this is the most important discrimination I face as a MSM

Participants unsure or ambivalent about donating blood in future:

I'm indifferent

They haven't exactly rolled out the red carpet

I still feel discriminated against by the blood service

Participants intending to donate blood in future:

I want to awhi my hapori

To give back to society

To help people in need